



Report of the Head of Scrutiny and Member Development

Scrutiny Board (Environment and Neighbourhoods)

Date: 11th April 2011

Subject: Recommendation Tracking

Electoral Wards Affected:

Specific Implications For:

Equality and Diversity

Community Cohesion

Narrowing the Gap

1.0 Introduction

- 1.1 Each Scrutiny Board receives a quarterly report, coinciding with the quarterly presentation of performance information, on the progress made in implementing the Board's recommendations.
- 1.2 This tracking system allows the Board to monitor progress and identify completed recommendations; those progressing to plan; and those where there is either an obstacle or progress is not adequate. The Board will then be able to take further action as appropriate.
- 1.3 A standard set of criteria has been produced to enable the Board to assess progress. These are presented in the form of a flow chart at Appendix 1. The questions in the flow chart should help to decide whether a recommendation has been completed, and if not whether further action is required.
- 1.4 To assist Members with this task, the Principal Scrutiny Adviser has given a draft status for each recommendation. The Board is asked to confirm whether these assessments are appropriate, and to change them where they are not.
- 1.5 This quarterly report shows progress against recommendations arising from the following previous inquiry:
 - Inquiry into Recycling

2.0 Recommendations

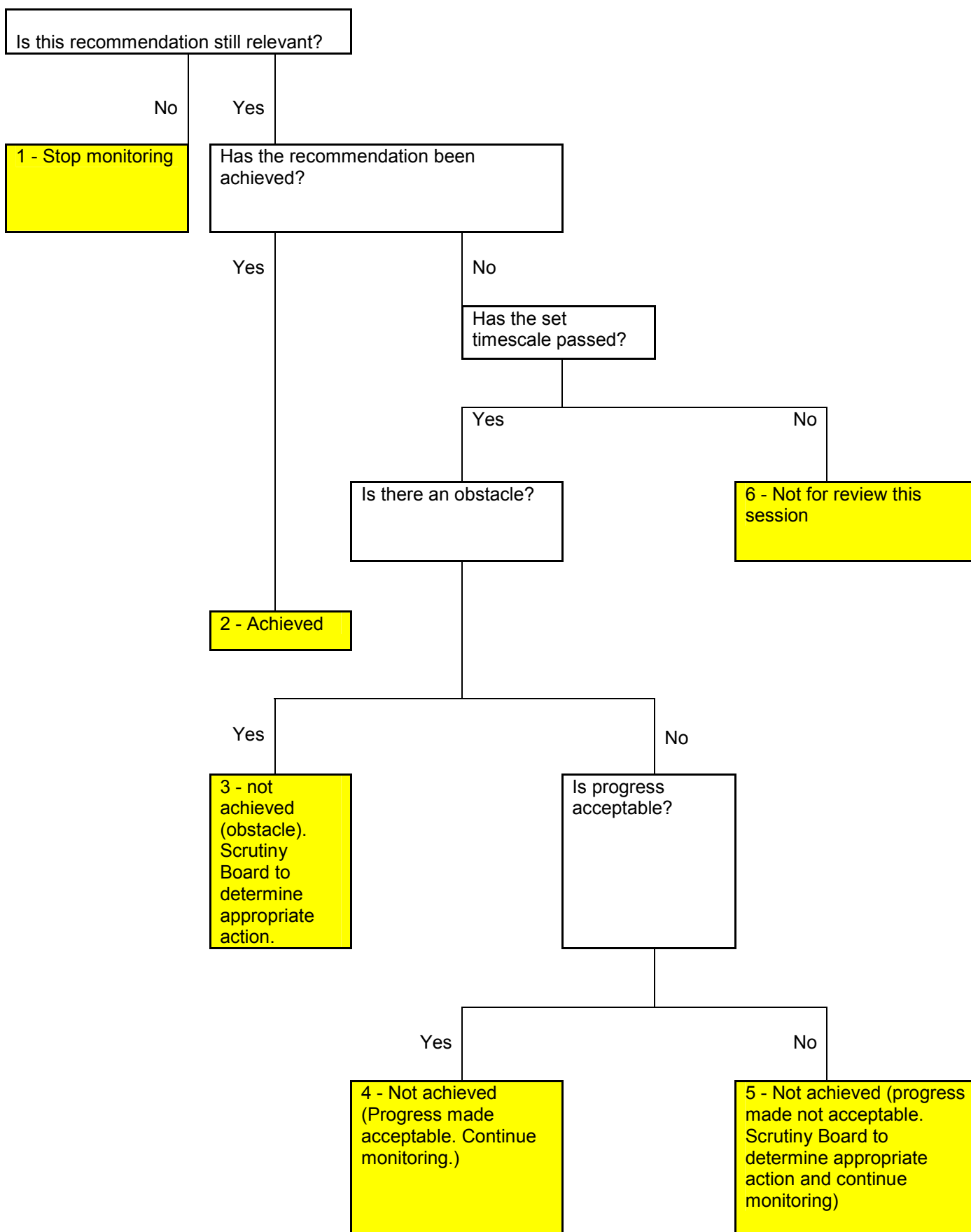
2.1 Members are asked to:

- Agree those recommendations which no longer require monitoring;
- Identify any recommendations where progress is unsatisfactory and determine the action the Board wishes to take as a result.

Background Papers

Environment and Neighbourhoods Scrutiny Board Final Inquiry Report September 2010.

Recommendation tracking flowchart and classifications:
Questions to be Considered by Scrutiny Boards



Inquiry into Recycling September 2010

Categories

- 1 - Stop monitoring
- 2 - Achieved
- 3 - Not achieved (Obstacle)
- 4 - Not achieved (Progress made acceptable. Continue monitoring)
- 5 - Not achieved (Progress made not acceptable. Continue monitoring)
- 6 - Not for review this session

Recommendation for monitoring	Evidence of progress and contextual information	Status (categories 1 – 6) (to be completed by Scrutiny)	Complete
<p>Recommendation 1 In recognising the benefits of the green bag SORT collection scheme and communal collection scheme in addressing the challenges presented by hard-to-access properties, we recommend that these schemes are given priority consideration for those areas across the city with similar property types that do not have access to a kerbside SORT collection service.</p>	<p>Formal Response : Ongoing</p> <p>Current position:</p> <p>The Recycling Improvement Plan (RIP) has been closely linked to the recent route redesign process implemented through the Streetscene Change Programme.</p> <p>Properties which previously received black bag collections were automatically routed to a SORT round. This meant that any residents who previously didn't receive a green bag collection were able to access the service. A schedule of green bag distribution has been undertaken alongside the city-wide green SORT bin roll-out programme which commenced in November 2010.</p>	4	

	<p>Communal recycling on ALMO managed estates has been given priority status through RIP. Work is now complete on the Beckhill estate and it is anticipated that the three sites will become operational in May 2011. We have secured funding to construct 23 recycling sites on the Holtdales estate. Before construction commences, a consultation with local residents is being carried out to ascertain their preferred approach for recycling facilities on the estate. Collections are planned to commence in summer 2011. This process will be replicated for the Cottingley estate later on in the year</p> <p>Funds have been received from Aire Valley Homes and East North East Homes to offer communal recycling facilities at ALMO managed high rise flats. West North West Homes have opted to project manage the groundworks for properties within their management leaving Recycling and Waste Services to provide receptacles and undertake resident communication. Since last August, eight ALMO managed high-rise properties have been offered recycling collections serving around 530 households. An additional 14 highrises will be given facilities over the coming months.</p>		
<p>Recommendation 2 That the Director of Environment and Neighbourhoods ensures that, where consultations are being conducted with Ward Members and local residents around appropriate recycling service options, that the relevant Area Committees are regularly kept informed of progress.</p>	<p>Formal Response: Ongoing</p> <p>Current position:</p> <p>For the Holtdale estate, regular meetings have been held with relevant stakeholders including Elected Members and Area Committees. This process will continue until all residents have access to recycling collections on the estate and the process will be</p>	<p>4</p>	

	<p>replicated when work commences on the Cottingley Estate.</p> <p>A more detailed update will be provided to both elected members and Area Committees on the progress of the Recycling Improvement Plan. This update will be prepared following the end of the financial year ending 2010/11.</p>		
<p>Recommendation 3 That the Director of Environment and Neighbourhoods ensures that the findings of the options appraisal around the collection and recycling of glass across the city is reported back to Scrutiny for consideration as soon as possible</p>	<p>Formal Response Ongoing</p> <p>Current position: WRAP (Waste Resources Action Programme) has commissioned a report on behalf of Leeds to research options for the collection of glass at the kerbside.</p> <p>The WRAP report is due to be completed by the beginning of April and will be shared with Scrutiny</p>	4	
<p>Recommendation 4 That the Director of Environment and Neighbourhoods ensures that, as part of the Recycling Improvement Plan, future plans to expand the bring site network further in Leeds take into account the following factors:</p> <ul style="list-style-type: none"> • those areas where the proportion of 	<p>Formal Response Ongoing</p> <p>Current position: New locations for bring sites are being sought and assessed throughout the City.</p> <p>Where noise may be presenting a problem to the closest residents, noise monitoring can be undertaken. If noise nuisance is an issue,</p>	4	

<p>glass is greater than the average, thereby having the potential to overwhelm a bring infrastructure;</p> <ul style="list-style-type: none"> • that potential noise nuisance resulting from glass recycling containers is minimised as much as possible where sites are proposed within residential areas. 	<p>acoustic banks can be deployed. These reduce noise when glass is being placed in the bank and have proven extremely successful in certain locations.</p>		
<p>Recommendation 5 That the Director of Environment and Neighbourhoods ensures that the findings arising from the future planned review into the operational practices of Household Waste Sorting Sites and Bring Sites be reported back to Scrutiny for consideration.</p>	<p>Formal Response</p> <p>See separate report</p>	<p>1</p>	
<p>Recommendation 6 That the Director of Environment and Neighbourhoods ensures that the findings from the kitchen waste pilot scheme in Rothwell be reported back to the Scrutiny Board for consideration.</p>	<p>Formal Response</p> <p>Completed</p>	<p>1</p>	

<p>Recommendation 7 That the Director of Environment and Neighbourhoods explores opportunities available to work more closely with charities to coordinate services for the collection of textiles in a better way.</p>	<p>Formal Response Ongoing</p> <p>Current position:</p> <p>A detailed strategy for textile collection/recycling is to be developed and shared with Scrutiny.</p>	<p>4</p>	
<p>Recommendation 8 That when the contract for the Materials Recycling Facility (MRF) expires and is thereby subject to a competitive tendering process, that potential bidders be asked to give an indication of costs for adding textiles to the contract to enable the Council to evaluate the cost benefits of this approach.</p>	<p>Formal Response Ongoing</p> <p>Current position:</p> <p>The Contract we currently have with the MRF operator accepting our co-mingled materials has recently been extended and is due to expire on 5th May 2013. Prior to that time we intend to undertake a market sounding process asking for feedback around the textiles issue. This market sounding would be aimed at all interested parties including MRF operators, waste disposal/recycling organisations, 3rd sector service providers and the textile industry etc. We will be seeking views on how textiles can be collected and recycled/re-used, how participation can be maximised and how the 3rd sector can be utilised to provide a convenient, cost effective and reliable method of diverting this valuable waste stream from landfill.</p> <p>The results of this market sounding will be made available at that time and the views within it would help inform our overall textile strategy.</p>	<p>4</p>	

<p>Recommendation 9 That the Director of Environment and Neighbourhoods and Executive Member for Environmental Services lead on lobbying the Environment Secretary of State to develop a national approach for the use of plastic packaging with a view to restricting the range of plastics used.</p>	<p>Formal Response Ongoing: No further comment at this stage</p>	<p>4</p>	
<p>Recommendation 10 That the Director of Environment and Neighbourhoods encourages innovative partnership working arrangements with local supermarkets to help provide additional collection points for a range of recyclable materials.</p>	<p>Formal Response Ongoing</p> <p>Current position: Officers are working along side the planning department to encourage new supermarket developments to incorporate recycling facilities within their plans</p>	<p>4</p>	
<p>Recommendation 11 That the Director of Environment and Neighbourhoods explores the potential benefits of adopting pneumatic waste collection systems, such as the Envac system currently installed in the new Wembley City residential complex, and also other individual subterranean systems within Leeds in consultation with and input and advice from the Director of City Development.</p>	<p>Formal Response Ongoing</p> <p>Current position: Environment and Neighbourhoods are continuing to explore and research different subterranean systems to assess their suitability for new developments in Leeds</p>	<p>4</p>	

<p>Recommendation 12 That the City Development Scrutiny Board be involved in the consultation process to consider the draft Sustainable Design & Construction Supplementary Planning Document and undertakes to ensure that appropriate weight is given to the role of waste management as part of the SPD.</p>	<p>Formal Response Ongoing</p> <p>Current position: The Sustainable Design and Construction Supplementary Planning Document (Building for Tomorrow Today) (SDC SPD) was subject to public consultation between June and September 2010. The comments received together with the proposed amendments to the waste section proposed by Environmental Services have been analysed and the vast majority included in the revised version of the SPD. This has been signed off by Planning Board in City Development and final revisions are now being concluded by the Graphics team. The Lead Members for Development and Environmental Services will be fully briefed on the final version before it is published.</p>	<p>4</p>	
<p>Recommendation 13 That the Directors of Environment and Neighbourhoods and City Development ensure that representatives from waste management have an active input into future major planning developments to ensure that appropriate consideration is given to waste management as part of the proposed infrastructure.</p>	<p>Formal Response Ongoing</p> <p>Current position: The guidance for both City Development and developers describing the required bin storage and access provision to accommodate existing and potential LCC bin collection regimes on bin storage and access is being drafted.</p> <p>Consultations with Highways DC and the Sustainable Development Unit have already taken place regarding the draft guidance.</p>	<p>4</p>	

<p>Recommendation 14 That the Directors of Environment and Neighbourhoods and City Development report back to the Scrutiny Board within the next 3 months on the implications of the Government's plans to abolish Regional Spatial Strategies in relation to waste management.</p>	<p>The attempt to abolish Regional Strategies in July 2010 by the Secretary of State for Communities and Local Government was declared unlawful by the Courts in November 2010. This means that our RSS, the Yorkshire and Humber Plan, and its housing requirements for Leeds does form part of the statutory development plan for Leeds until such time as regional strategies are abolished by the enactment of the Localism Bill, expected sometime in 2012.</p> <p>However, the Secretary of State has declared that the intention to abolish regional strategies should be treated as a material consideration in planning applications and local plan making decisions; the challenge to this declaration was recently dismissed in the Courts, so Leeds is able to give weight to the intention to abolish the Yorkshire and Humber Plan in planning for the Natural Resources and Waste Development Plan Document (NRWDPD).</p> <p>Leeds City Council commissioned consultants GVA in 2010 to update Leeds' Strategic Housing Market Assessment (SHMA). This will provide evidence to help the Core Strategy to set a housing requirement for Leeds, which will be subject to public examination in 2012 and adopted soon after. As the preparation of the NRWDPD is ahead of the Core Strategy by some 6-12 months it will use the latest population and housing forecasts of the SHMA providing they are backed up by robust enough evidence to depart from the Yorkshire and Humber Plan.</p> <p>The waste flow model underpinning the waste solution programme, has been updated. Due to the uncertainty regarding the RSS housing figures and in close consultation with City Development, a range of housing growth forecasts have been modelled to provide the best and worse case scenarios for waste growth in Leeds.</p>	<p>1</p>	
--	---	----------	--

<p>Recommendation 15 That the Directors of Environment and Neighbourhoods and City Development ensure that Environmental Services and Planning officers continue to link into the work of the Yorkshire and Humber Waste Regional Advisory Group and Regional Technical Advisory Group or their successor bodies.</p>	<p>Formal Response Ongoing</p> <p>Current position: Officers have continued to regularly attend the Waste Regional Advisory Group and Waste Prevention Panel. We will support the continuing function of the Waste and Recycling Advisory Group by providing officer support.</p>	<p>4</p>	
<p>Recommendation 16 That the Director of Environment and Neighbourhoods explores the feasibility and potential benefits of developing and piloting an incentive scheme as a way of engaging more people to recycle.</p>	<p>Formal Response Ongoing</p> <p>Current position: Officers have carried out a review to understand the various incentive schemes that are currently available and in use in the U.K. and await the production of the Governments Waste Review to see the recommendations that may be included about incentive schemes.</p>	<p>4</p>	

<p>Recommendation 17 That the Director of Environment and Neighbourhoods (i)ensures that the issues raised with the Scrutiny Board by Student Unions and Unipol are addressed as part of the wider piece of work being undertaken jointly between Environmental Services and the Student Unions in providing appropriate recycling provision for students (ii) write to the Minister for Housing and Local Government seeking the necessary power to allow local authorities the discretion to tackle the problem of recycling in respect of Houses in Multiple Occupation by adopting their own local solutions, in consultation with local landlords</p>	<p>Formal Response Ongoing Current position: The issues raised as part of the Scrutiny Board have been added to the outcomes of the research undertaken to improve waste management in areas with high student populations.</p> <p>Work has not progressed as quickly as expected on implementing the recommendations, largely due to the implementation of redesigned refuse collection routes across the city. Now that the routes have been implemented and the service has stabilised, we will restart this work in earnest.</p> <p>We will be meeting with colleagues across the council to develop an action plan for improving service provision in the area and the development of a communications plan to ensure that all residents know how to use the service effectively. Landlords are key stakeholders in the area and we are working with colleagues in Private Sector Housing and Licensing sections and with the University and Unipol to develop our approach to engaging landlords in identifying solutions to the challenges faced throughout the year, and in particular during the changeover period at the end of the summer term.</p>	<p>4</p>	
<p>Recommendation 18 That the findings from the independent market research project into the recycling patterns of residents living within areas of the city with a high student occupancy, be brought back to Scrutiny as soon as possible for consideration.</p>	<p>Formal Response Ongoing Current position: We will provide a brief report for Scrutiny Board outlining the findings and recommendations of the independent market research and the outcomes of a workshop held with colleagues from across the council and with both Universities in the light of this about possible solutions</p>	<p>4</p>	

<p>Recommendation 19 That the Director of Environment and Neighbourhoods ensures that the Council's handbook on business waste is disseminated widely amongst local businesses across the city.</p>	<p>Formal Response Ongoing</p> <p>Current position: Ongoing. The business waste handbook is to be promoted to all businesses in Leeds by a flyer to be included with business rates bills in March 2011.</p>	<p>4</p>	
<p>Recommendation 20 That the Director of Environment and Neighbourhoods ensures that Scrutiny is recognised as a key stakeholder as part of the consultation process when reviewing the Leeds Integrated Waste Strategy.</p>	<p>Formal Response Ongoing. No further comments at this stage</p>	<p>4</p>	